

# Randomized Phase 3 Trial of $^{68}\text{Ga}$ -PSMA-11 PET/CT Molecular Imaging for Prostate Cancer Salvage Radiotherapy Planning [PSMA-SRT]: Study Protocol NCT03582774

J Calais, J Czernin, W Fendler, J Gartmann, K Booker, R Alano, D Elashoff, A Kishan, Nicholas Nickols

- **Poster Pub#1319**
- MEET-THE-AUTHOR I, MTA Poster Session I, **Monday, June 24, 3:00PM - 4:30PM**
- Oncology: Basic, Translational & Therapy Track

**Jeremie Calais MD MSc**

Assistant Professor

AHMANSON TRANSLATIONAL THERANOSTICS DIVISION

UCLA

# IMPACT on RT Planning



Salvage RT

PSMA PET/CT can show  
Disease outside of the standard radiation fields

- Salvage RT:

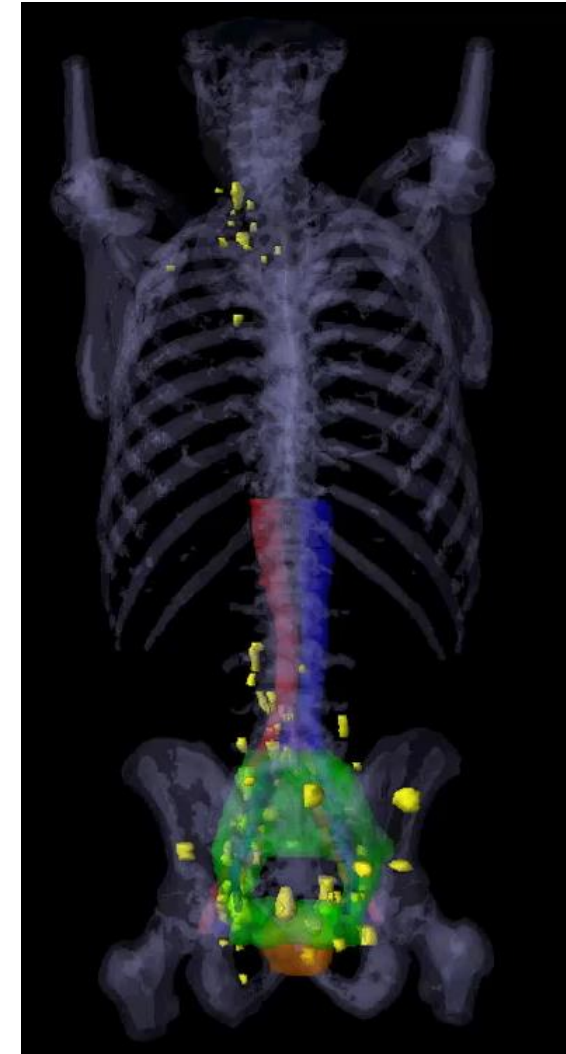
Major impact in **19%** of patients with Early Recurrence after surgery (PSA <1.0)

- Definitive RT:

Major impact in **17%** of patients with intermediate to high-risk disease

J.Calais et al. *J Nucl Med* 2018

**JNM** | THE JOURNAL OF  
NUCLEAR MEDICINE



Definitive RT

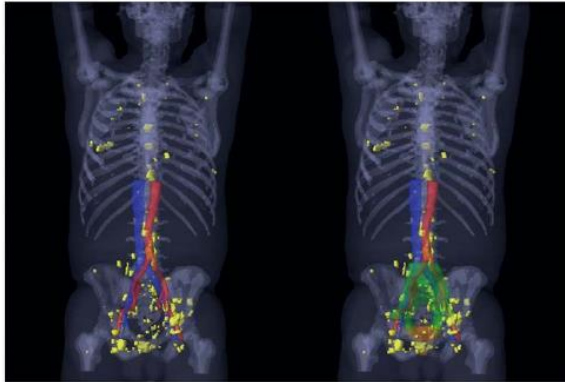
# $^{68}\text{Ga}$ -PSMA-11 PET/CT imaging IMPACT on OUTCOME ?

VOLUME 59 ■ NUMBER 2 ■ FEBRUARY 2018

## JNM | THE JOURNAL OF NUCLEAR MEDICINE

### FEATURED ARTICLE

$^{68}\text{Ga}$ -PSMA-11 PET/CT Mapping of Prostate Cancer Biochemical Recurrence After Radical Prostatectomy in 270 Patients with a PSA Level of Less Than 1.0 ng/mL: Impact on Salvage Radiotherapy Planning. Jeremie Calais et al. See page 230.



Differentiating normal prostate from cancer: Can PET/CT localize PSMA expression? Nadine Woythal et al. See page 238.

This study justified  
**a randomized phase 3 trial**  
powered for clinical outcome:

Standard SRT  
VS  
PSMA-based SRT

NIH U.S. National Library of Medicine

ClinicalTrials.gov

NCT03582774

UCLA

Poster Pub#1319

DI EUROPE

### STROKE TREATMENT



Brain-scan guided emergency stroke treatment can save more lives. Ground-breaking study finds patients treated up to 16 hours after stroke showed positive outcomes

### RADIATION DOSE REDUCTION

- Radiation dose – news
- Dose reduction in digital radiography
- Optimisation of dose in CT scans
- Tackling the overuse of imaging in pulmonary embolism
- Gd deposition: the current status and the different regulatory approaches in the US and Europe
- Imaging in large vessel vasculitis
- Predicting the radiology of tomorrow: the likely impact of precision medicine and digital transformation
- Breast imaging: the breast under pressure
- A new powerhouse in European medical imaging: Canon Medical Systems Europe
- Critical Care Ultrasound training in Europe
- Enabling intuitive 3D imaging on 2D ultrasound systems: a low-cost solution
- Imaging News
- Industry News
- Technology Update

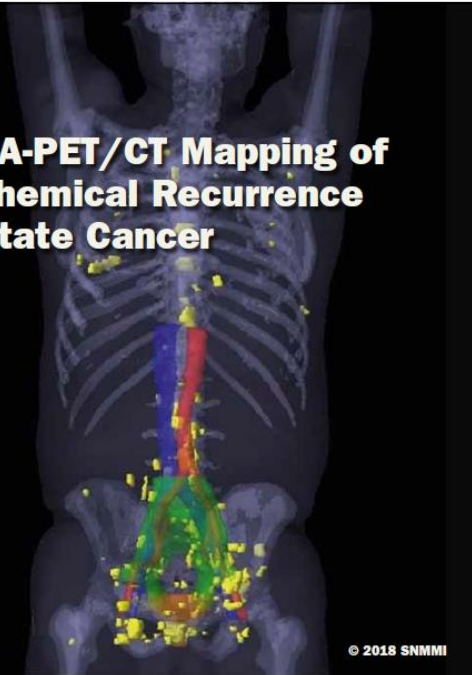
DIEUROPE.COM

DIAGNOSIS • TECHNOLOGY • THERAPY • PREVENTION

MARCH 2018

## DIAGNOSTIC IMAGING EUROPE

### PSMA-PET/CT Mapping of Biochemical Recurrence Prostate Cancer

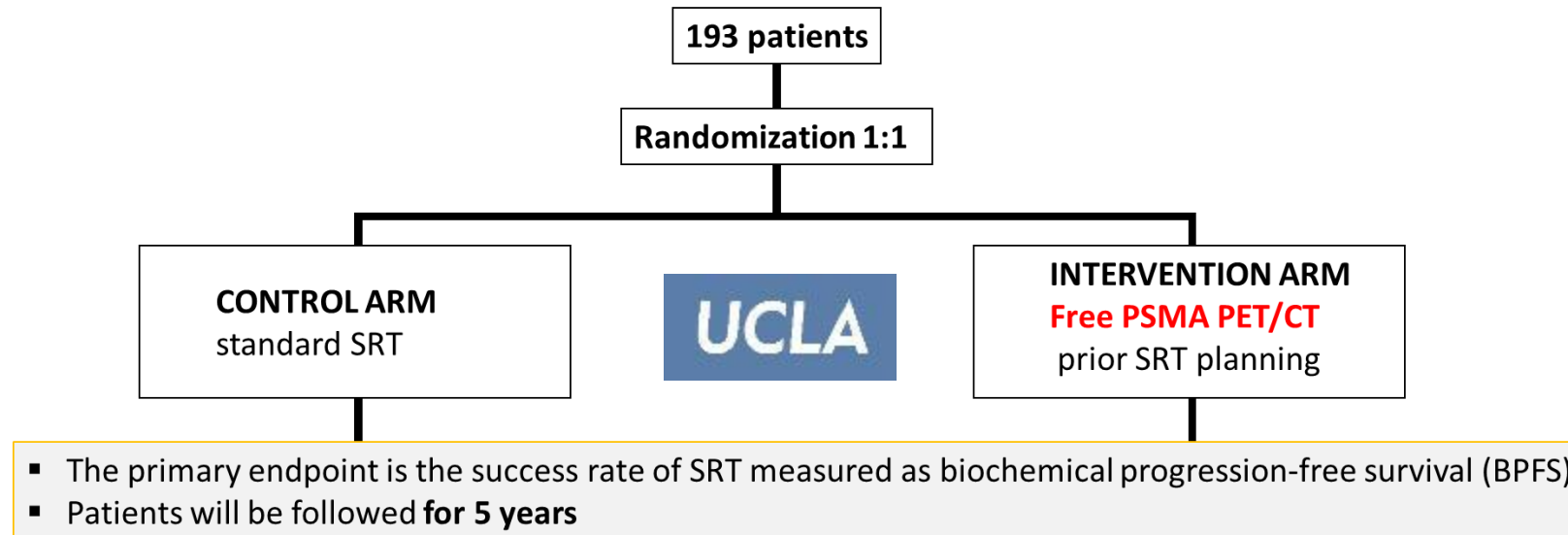


© 2018 SNMMI

# STUDY DESIGN

➤ **purpose of the trial :**

to evaluate the success rate of SRT for recurrence of prostate cancer after prostatectomy with and without planning based on PSMA PET/CT.



- **Poster Pub#1319**
- MEET-THE-AUTHOR I, MTA Poster Session I, **Monday, June 24, 3:00PM - 4:30PM**
- Oncology: Basic, Translational & Therapy Track